

REPORT ON THEME-BASED GRAM PANCHAYAT DEVELOPMENT PLAN



A Case Study of Gram Panchayat Rehore



Prepared by SDG Coordination Centre (SDGCC), Swarna Jayanti Haryana Institute for Fiscal Management (SJHIFM), Finance & Planning Department, Haryana



Table of Content

01. Executive Summary

02. Introduction

03. Significance of Theme-based GPDP

04. Field Level Discussions

- Visit to Gram Sachivalaya
- Visit to Anganwadi Centre
- Visit to Primary School
- Visit to Middle School
- Visit to HSRLM office
- Visit of Food & Civil Supplies Office

05. Village Walk

- Women's Issues
 - Agricultural Issues
 - WASH Issues
 - Educational Issues
 - Animal Husbandry Issues
 - Other Issues
-



06. Participation in Gram Sabha

- Common Works of Gram Panchayat
 - Main Works Concerning Different Wards
-

07. Thematic Activities under GPDP

- Distribution of Activities Across Themes
 - Budget Allocation Across Themes
 - Low-Cost/ No-Cost Awareness Generation Activities
-

08. Recommendations

09. PRIME Mobile App

- Introduction
 - Objectives
 - Methodology
 - Features
 - Benefits
 - Recommendation
-

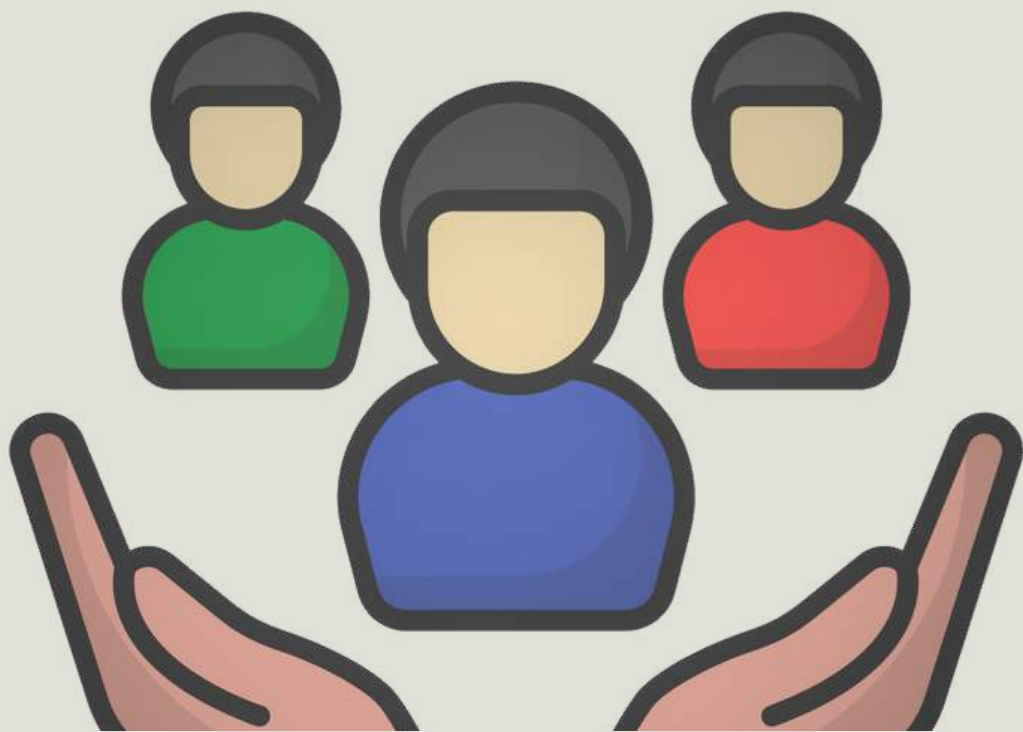
09 Annexure- Details of GPDP Activities

EXECUTIVE SUMMARY

The report presents a comprehensive overview of the Theme-based Gram Panchayat Development Plan (GPDP) for the year 2023-2024, specific to Gram Panchayat Rehore, Block Barwala, District Panchkula. The GPDP, aligning with the government's commitment to achieve 17 Sustainable Development Goals (SDGs) by 2030, is envisioned to spread across nine key themes that aspire towards creating an ideal village community, free from poverty, ensuring health, and enriched with enhanced livelihood opportunities, child-centric facilities, sufficient water resources, clean and green environment, well-built infrastructure, social security, good governance, and support gender equality.

The GPDP consists of 73 diversified activities that span across these themes with an estimated budget of Rs. 13.82 lakhs. The plan demonstrates a balanced distribution of activities; approximately 20% are directed towards poverty alleviation and livelihood enhancement (Theme 1), followed by initiatives for a healthy environment (Theme 2) and child-friendly infrastructure (Theme 3) each constituting 17% of the activities. Measures for cleanliness and water sufficiency (Theme 4) make up 16% of the activities, while initiatives for a clean and green village (Theme 5) represent 18%. The remaining themes accommodate the rest of the activities. Budget-wise, a significant 40% is allocated for water sufficiency (Theme 4), predominantly for developing new drinking water sources, while Themes 1 and 5 receive 20% each for poverty alleviation, livelihood enhancement, and environmental conservation. Health and child-friendly initiatives make up 15% of the budget. Complementing these, the GPDP also incorporates several low-cost/no-cost activities for awareness generation, spanning self-employment, health, nutrition, sanitation, environmental issues, women's rights, and healthcare access, which collectively contribute to educating the local community, fostering sustainable practices, and enhancing the overall quality of life.

Based on field visits and interactions, the report also outlines several recommendations for enhancing the effectiveness of the GPDP implementation. These include improving community participation, ensuring better involvement of line departments, streamlining data collection at the Gram Panchayat level, and enhancing the capacity of Gram Panchayat level elected representatives and functionaries. The proposal of the PRIME Mobile Application by SDGCC Haryana seeks to strengthen data collection, planning, and monitoring at the local level, which is detailed in the subsequent sections of the report.



INTRODUCTION

This report presents an overview of the Theme-based Gram Panchayat Development Plan (GPDP) in GP Rehore, Block Barwala, District Panchkula. The Government of India (MoPR) has identified nine themes aggregating 17 Sustainable Development Goals (SDGs) for action at the local (Gram Panchayat) level. The objective is to achieve these SDGs by 2030. These 9 themes are (i) Poverty free and enhanced livelihoods village, (ii) Healthy village, (iii) Child friendly village, (iv) Water sufficient village, (v) Clean and Green village, (vi) Self-sufficient infrastructure in village, (vii) Socially secured village, (viii) Village with good governance, and (ix) Women-friendly village.

The plan focuses on a saturation approach, improved public service delivery, and strengthened monitoring processes based on local indicators. The field visits and discussions with various stakeholders have provided valuable insights into the current situation and the potential for future development. The findings from this case study can serve as a valuable resource for other Gram Panchayats embarking on similar initiatives.


The implementation of Theme-based Gram Panchayat Development Plan in Gram Panchayat Rehore of Block Barwala, District Panchkula, is a significant step towards the localization of SDGs at the grassroots level.

SIGNIFICANCE OF THEME BASED GPDP

This report presents an overview of the Theme-based Gram Panchayat Development Plan (GPDP) in GP Rehore, Block Barwala, District Panchkula. The Government of India (MoPR) has identified nine themes aggregating 17 Sustainable Development Goals (SDGs) for action at the local (Gram Panchayat) level. The objective is to achieve these SDGs by 2030. These 9 themes are (i) Poverty free and enhanced livelihoods village, (ii) Healthy village, (iii) Child friendly village, (iv) Water sufficient village, (v) Clean and Green village, (vi) Self-sufficient infrastructure in village, (vii) Socially secured village, (viii) Village with good governance, and (ix) Women-friendly village.

- The theme-based plans will translate SDGs in more simplistic and realistic terms to the local level in people's language itself thus leading towards raised awareness on themes concerning SDGs, opportunities of convergence, and responsibility of Gram Panchayat in developing participatory and inclusive planning with whole of society approach.
- It makes local planning realistic and constitutes an important departure from the current process of focusing on basic infrastructure related activities and immediate schematic outputs towards the long-term outcomes contributing towards achievement of SDGs.
- It focuses more on the saturation approach, improved public service delivery, and strengthened monitoring processes based on the local indicators.
- It will demonstrate ways for strengthening the functioning of Gram Panchayats. It will also demonstrate processes of improving responsiveness and accountability of Gram Panchayats and thereby improving local governance.

Accordingly, the Gram Panchayat Rehore in block Barwala of district Panchkula was identified to roll out pilot to promote SDG localization at the grassroot level. Field Visits were conducted by SDGCC-SJHIFM team members to the Gram Panchayat. Discussions were held with GP level functionaries and Block level officials. Field testing of Thematic Local Indicator Framework was also initiated in the pilot Gram Panchayat.





THE PROCESS

The field level process involved the following steps:

Situational Analysis

It involved identifying the local development issues of the Gram Panchayat as well as the needs and priorities of different communities inhabiting in the Panchayat. There were series of discussions with Gram Panchayat level functionaries like Panchayat Sachiv, Anganwadi Worker, Primary School Teacher, ANM, ASHA etc. on the availability, source, and frequency of data collection concerning Gram Panchayat level beneficiaries and delivery of public services.

Identified the needs through consultations with different social groups including farmers, MGNREGS workers, SHG members, etc.

Discussions with Block level and Gram Panchayat level Functionaries

During field visits discussions were held with Gram Panchayat level functionaries such as Anganwadi Worker, ASHA, Gram Sachiv, School Staff, etc. Separate discussions were also done with the staff placed at the block Barwala.

Village Walk

Village walk was conducted to identify the local issues faced by the villagers of Gram Panchayat Rehore.

Participation in Gram Sabha

Participation was made in the Gram Sabha which was conducted on 7th March 2023.



VISIT TO GRAM SACHIVALAYA

Discussions with Mr. Chandra Bhan, Gram Sachiv

The following government functionaries are at place in GP Rehore-

- Gram Sachiv – 1
- Anganwadi Worker – 2
- Anganwadi Helper – 1 (1 vacant)
- ASHA Worker – 1
- Gram Chaukidar – 1
- Lambardar – 1
- Safai Karamchari – 1
- School staff (9 teaching staff in two schools)

The GP Rehore has a population of 1410 persons of which there are 991 voters (18+ years) comprising 519 male and 472 female voters.

GRAM PANCHAYAT LEVEL COMMITTEES

- Social Justice
- Finance
- Health
- Jal Jeevan Mission

MAJOR REGISTERS AT GRAM SACHIVALAYA

The following major registers/documents are maintained directly by GP/ Gram Sachiv/ Sarpanch-

- GP Cash Book (Panchayat Fund A/c in Punjab National Bank + Scheme-wise Bank Accounts for Adarsh Vidhayak Yojana, Haryana Vikas Yojana, Haryana Rural Development Fund etc.)
- Gram Sabha Proceedings
- Patta Register
- 15th Finance Commission (5 Registers)
 - Ledger Book
 - Stock Register
 - Measurement Book
 - Cash Book
 - Proceedings Book
- MNREGA scheme related (4 Registers)
- Swamitva Yojana Proceedings Book
- Jal Jeevan Mission Proceedings Book



VISIT TO ANGANWADI CENTRE

Discussions with Ms. Sureshna Devi, AWW (Main Anganwadi Centre), and with Ms. Sukhwinder Kaur, AWW (Mini Anganwadi Centre)

GP Rehore has a Main AWC and a Mini AWC Center. The Mini AWC is in the SC households' area. The status of registered beneficiaries is as follows:-

Particular	Main AWC	Mini AWC
Children Registered (6 months - 3 years)	31	30
Children Registered (3 - 6 years)	35	26
Lactating Women	5	6
Pregnant Women	10	7
Underweight Children	Nil	Nil
BPL Households being covered	13	33

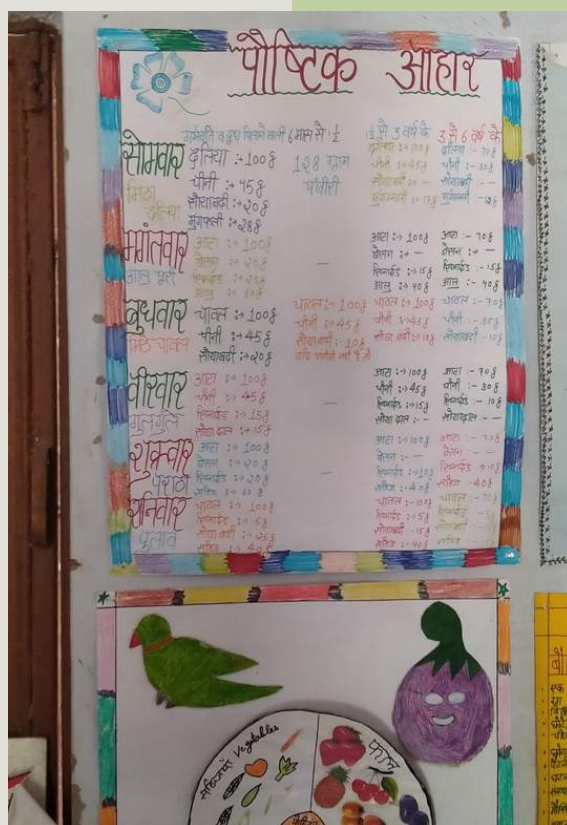
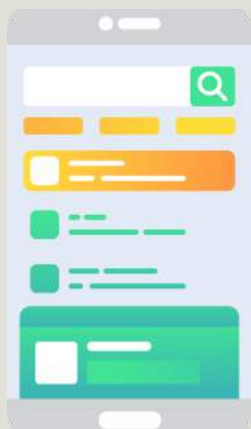
MAJOR REGISTERS AT AWC

The Anganwadi Worker is currently maintain 11 Registers as well as monthly and annual reporting forms:

- Register 1: Family Details
- Register 2: Supplementary Food Stock
- Register 3: Supplementary Food Distribution
- Register 4: Pre-School Education
- Register 5: Pregnancy and delivery
- Register 6: Immunization & VHND
- Register 7: Vitamin-A Bi-Annual Rounds
- Register 8: Home Visits Planner
- Register 9: Referrals
- Register 10: Summaries (Monthly and Annual)
- Register 11: Weight Record of Children
- Other Registers/ Records: Pradhan Mantri Matrutva Vandana Yojana Record/ MPR, VHSND Meeting Register, Still Births & Infant Deaths Report

POSHAN TRACKER APP

Apart from manually maintaining the above-mentioned registers, the Anganwadi Worker is also digitizing the data in the 'Poshan Tracker App' through her personal mobile phone.



Discussions with Ms. Reeta, ASHA Worker

The nearest Sub-Health Center is in the nearby village Khatauli.

The ASHA worker is also maintaining following major registers:

- Birth & Death Register (for all ages)
- NCD Register (for 30 years & above regarding Blood Pressure, Diabetes, and Cancer)
- VHSND Register
- VHNCS Register
- Immunization Register

A Tablet for data digitization has been provided to the ASHA worker with monthly government support of Rs.100/- for top-up.



VISIT TO GOVT. PRIMARY SCHOOL

This primary school has a staff comprising one Headmaster, two JBT teachers, and part time MDM Cook, Chaukidar, and Safai Karamchari.

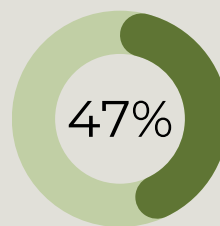
The school has 4 classrooms, a small playground, two toilets for boys & two toilets for girls (1 functional), separate toilet with ramp for differently abled, and boundary wall.

The primary school receives SSA grant @ Rs.25,000/- per annum (where < 100 students), and MDM grant @ Rs.4.97/- per student per day.



Girl Students

There are 64 students (34 girls + 30 boys) enrolled in the primary school including one differently abled girl student.



Boy Students

The school has 4 classrooms, a small playground, two toilets for boys & two toilets for girls (1 functional), separate toilet with ramp for differently abled, and boundary wall.

There are no dropouts in Class I-V or out-of-school children.



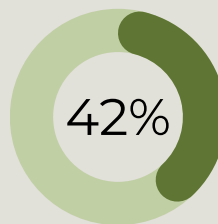
VISIT TO GOVT. MIDDLE SCHOOL

This middle school has a staff of 6 (against 7) viz. Headmaster, Science Master, Social Science Master, Sanskrit Teacher, DPE, Physical Education Teacher, Drawing Teacher (vacant).

The school has 4 classrooms, a small playground, two toilets for boys & two toilets for girls (1 functional), separate toilet with ramp for differently abled, and boundary wall.

In Govt. Middle Schools of Haryana, one Tablet has been provided to Headmaster only.

In the Haryana State, there is provision for a Tablet to all teachers and students of Class X and Class XII.



Girl Students

There are 33 students (19 boys + 14 girls) enrolled in the middle school including 2 differently abled students.



Boy Students

The school has 3 classrooms, a playground, separate toilets for boys & girls, and boundary wall (needs repair at many points).

The school receives funds through three major sources- SSA grant @ Rs.25,000/- per annum (where < 100 students), MDM grant @ Rs.7.50/- per student per day, and budget for electricity consumption (through treasury based on demands). Apart from school level funds, the students receive direct benefits in the form of books, uniforms, and scholarships.

The School Management Committee (SMC) takes decision on spending the SSA grants. SMC of Govt. Middle School Rehore has 13 members.



Discussions with Ms. Anupama, Data Operator

There are 4 SHGs in GP Rehore @ 10 members per SHG.

SHG Basic Training has been provided to all 4 SHGs at the time of group formation.

Each SHG is maintaining following 7 Registers/ Documents:

- SHG Meeting Register
- Cash Book
- Ledger Book
- Loan Ledger
- Voucher details
- Receipts
- Savings Passbook (each member)

HSRLM is providing Revolving Fund (RF) support to the eligible SHGs as corpus, @ of Rs. 20,000/- per SHG. 2 SHGs of GP Rehore have received the revolving fund. However, the SHGs of GP Rehore are yet to be further motivated for sustainable income generating activities. To date only one member has invested in purchasing a buffalo.

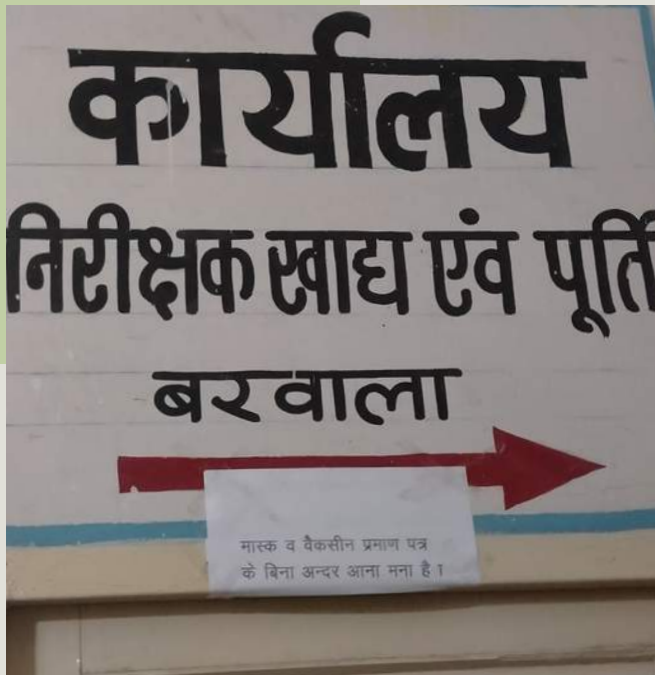
VISIT TO HSRLM OFFICE

Visit was made to the office of the Haryana State Rural Livelihood Mission (HSRLM) based at block level within the premises of the BDPO office at block Barwala.

There is also a Block Programme Manager to coordinate the HSRLM activities at the block level. HSRLM has its own MIS on several parameters.

Normally, there are four sources of funding to SHGs viz. Revolving Fund, Community Investment Fund, Bank Loans, and member's own savings.





VISIT TO FOOD & CIVIL SUPPLIES

The functioning staff of the Food & Civil Supplies office at Barwala comprises one Inspector, one Sub-Inspector, and one Data Entry Operator. This office serves 32 villages (including gram panchayat Rehore) and manages 10 Depot Holders of Fair Price Shops (FPS).

It was observed that apart from some data availability at the GP level itself, there are some block level government offices which have some relevant data concerning the GP Rehore.

Major government offices at block Barwala are BDPO office, CDPO office, Office of Block Education Officer, Mandi Board Office/ Market Committee, Office of Block Agriculture Officer, Veterinary Hospital, HSRLM office, Primary Health Center (at GP Bataur), Office of Inspector Food & Civil Supplies, UHBVN (at GP Bataur), and Police Cahuki.

Discussions with Mr. Rajkumar, Inspector, Food & Civil Supplies, Barwala

Visit was made to the office of the Food & Civil Supplies based at block level in the Mandi premises.

At the time of visit it was found that there was no permanent Depot Holder at Rehore for quite some time and one designated Depot Holder from nearby village visits Rehore frequently for distribution of PDS ration to the entitled beneficiaries.

The FPS-wise beneficiary details are available at the block level as well as with the Depot Holder.

The information about ration availability is sent directly to the ration card holders through push messages. The FPS-wise beneficiary details are available at the block level as well as with the Depot Holder.



VILLAGE WALK

A village walk was conducted in Rehore by Mr. Rishi Raj Sharma, Decentralization Lead, and Mr. Yashraj Singh, Intern of SDGCC Haryana on 26th January 2023.

The purpose of this walk was to identify the local issues faced by the villagers of Gram Panchayat Rehore.

OBJECTIVE

The primary objective of the village walk was to engage with the villagers to understand the local issues they face daily and comprehend the root causes of these problems. The walk aimed to understand the villagers' perspectives on challenges related to health, gender, water sanitation & hygiene, employment, education, waste segregation, safety, animal husbandry, and rural development.



WOMEN'S ISSUES



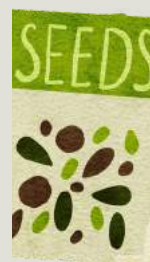
Women requested a guarantee of at least 100 days of work under the MNREGA Act 2005. If this cannot be provided, they should receive a daily unemployment allowance to which they are entitled.

There was a willingness to participate in skill development and capacity-building programs for income-generating activities.

These activities include jewelry making, operating spice crushing machines, packaging work, and beautician courses. Training for these skills could be conducted in 'Dharamshalas' (Community Halls) if no other space is available.

AGRICULTURAL ISSUES

The poor quality of paddy seeds has resulted in infertile land, causing crops to lose their potential growth.



With the current seeds, the yield from 1 acre of seeds is approximately 10 quintals, whereas the yield used to average between 25-30 quintals.



WASH (WATER SANITATION AND HYGIENE) ISSUES



A 2-acre pond is currently undergoing rehabilitation and remediation work under the MNREGA scheme. Proposed activities for this pond include the creation of a walking track, planting flowering boundaries, installing cameras and lights, setting up dustbins, and beautifying the pond.

WATER PIPE LEAKAGES



There is a significant issue with the leakage of underground water pipes near the road, making tap water unsafe to drink. These leakage points are found at many prominent spots in the village.

EDUCATIONAL ISSUES

The current school only provides elementary level education, causing issues for young girls who have to travel to other places or block headquarters for higher classes.



There was an appeal to upgrade the current school to provide education up to the 12th standard.

ANIMAL HUSBANDRY ISSUES



Villagers often tie their cattle and cows in public places, causing road congestion and leading to cow dung littering the roads and streets.

According to the villagers, ineffective artificial insemination in cows and buffaloes could be a major cause of increased miscarriages and infertility in cattle. .

A survey or pilot study was suggested to identify the root cause.

MISCELLANEOUS ISSUES

There have been cases of cancer among young people in the village and other fatalities due to conditions such as brain hemorrhage.

A pilot study was suggested to ascertain the cause of these health issues.

Aged iron electricity poles were found to be rusting and in need of immediate attention or replacement.



There are waste management issues in the village due to the absence of dustbins.



PARTICIPATION IN THE GRAM SABHA REHORE

The Gram Sabha regarding GPDP was held at Gram Panchayat Rehore on 7th March 2023. It was attended by very few grassroot functionaries and people of the village. The SDG Decentralization Lead and the Intern from SDGCC also participated in the Gram Sabha. In the Gram Sabha the participants from different wards highlighted the need of the following main activities: -

Common Works:

- Boundary wall construction work regarding Middle School
- Big streetlight at the main entrance to the Gram Panchayat
- Sport kits (Cricket, Kabbadi) for children
- Gate and Electricity in the sports ground
- Tile works in Pond pathways and Tree Plantations
- Works related to SC Chaupal
- Drainage (Nala) repair works
- Repair works related to Gram Sachivalaya (CCTV, Electric works, Water Tank, Bathroom)
- 25 Benches in main public places (Chauks)
- BC Chaupal related works- Electric fittings, Fan, Water Tank, and Bathroom repair
- Decision taken to form Village Water and Sanitation Committee (VWSC)

Main Works concerning different Wards:

- Repair of old streetlights and installation of new streetlights
- Road repair work from Deepchand house to Tarseem house
- Construction of concrete path from main road to Sheetla Maata Temple
- Iron channel for drainage (2 in nos.) - one near Balram's house, and one near Baijanath's house
- Repair works related to Chaupal-Floor, Door, Windows, Bathroom, and White-Wash
- Iron channel for drainage (4 in nos.) - one each near houses of Deepchand, Rakesh, Bhauram, and Mahipal
- Road repair work from Deepchand house to Tarseem house
- Construction of concrete path from main road to Sheetla Maata Temple
- Iron channel for drainage (2 in nos.) - one near Balram's house, and one near Baijanath's house
- Repair works related to Chaupal-Floor, Door, Windows, Bathroom, and White-Wash

GRAM PANCHAYAT DEVELOPMENT PLAN (GPDP) APPROVED ACTIVITIES

The Gram Sabha held on 7th March 2023 was followed by another Gram Sabha on 27th March 2023 for discussion on the proposed activities of previous Gram Sabha, inclusion of new activities, and finalization of the Gram Panchayat Development Plan (GPDP) and its approval in the Gram Sabha. The approved GPDP in the Gram Sabha covers a wide range of sectors including drinking water, land improvement, non-conventional energy sources, roads, and sanitation. The GPDP comprises a total of 73 activities spreading across different Themes with a total budget of Rs. 13.82 lakhs. It also covers several 'low-cost no-cost' activities.

DISTRIBUTION OF ACTIVITIES ACROSS THEMES:

In terms of activities distribution, 20% of all the activities have been aligned with the Theme 1 (Poverty free and enhanced livelihoods village) including activities such as

providing benefits to Public Distribution System beneficiaries, holding camps for self-employment, promoting fish farming, creating self-help groups, and generating demands for welfare schemes like Pradhan Mantri Awas Yojana (PMAY) and UJJWALA Gas connection.

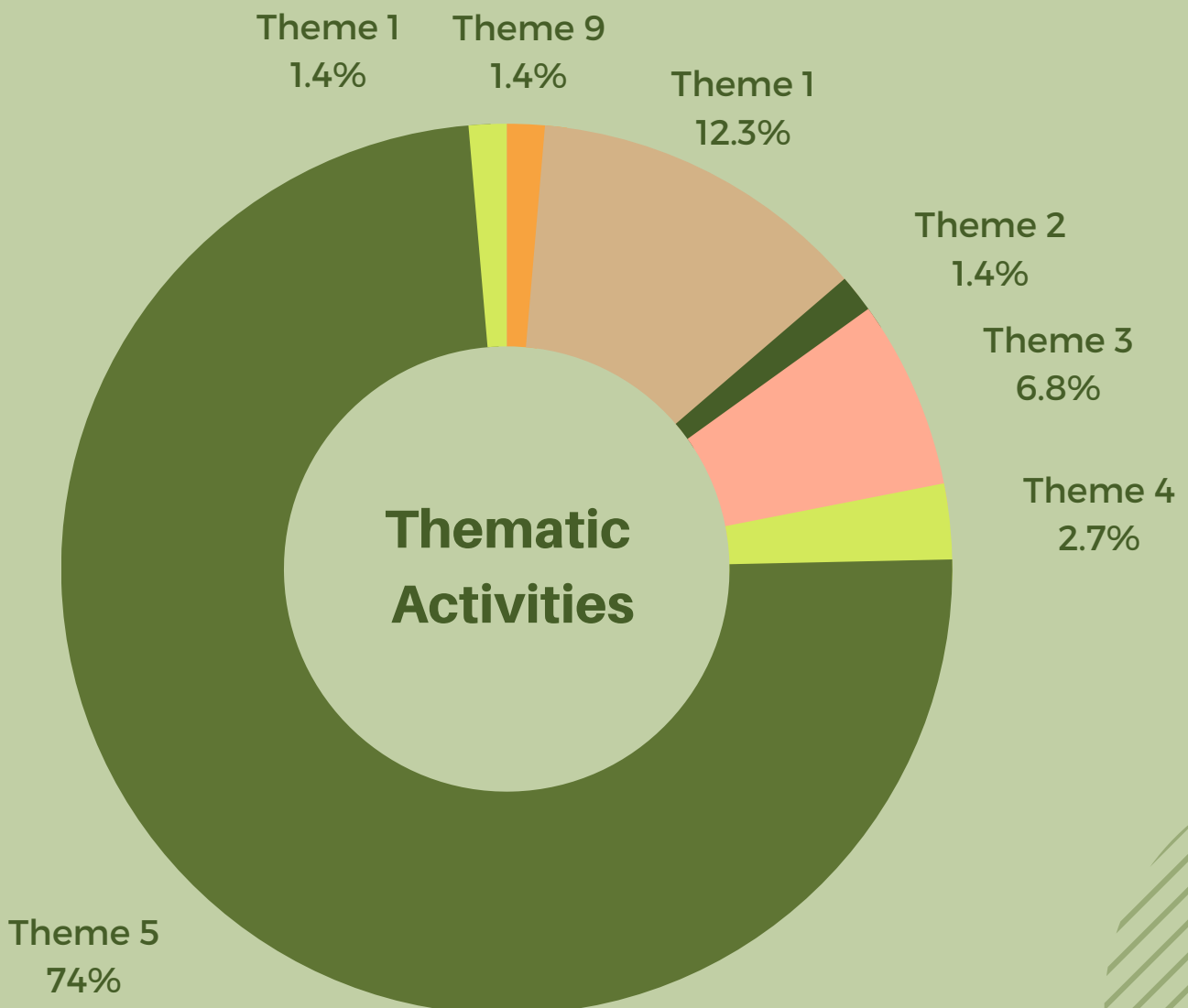
Particular	Total Activities
Theme 1: Poverty free and enhanced livelihoods village	9
Theme 2: Healthy village	1
Theme 3: Child friendly village	5
Theme 4: Water sufficient village	2
Theme 5: Clean and Green village	54
Theme 6: Self-sufficient infrastructure in village	1
Theme 9: Women-friendly village	1
Total Activities	73

Theme 2 (Healthy village) and Theme 3 (Child friendly village) each comprised 17% of the overall activities. These activities include demands for health cards and awareness campaigns regarding the services of ICDS, and measures for addressing school dropouts.

Around 16% of all the activities fall under Themes 4 (Water sufficient village), targeting issues related to cleanliness and sanitation awareness and developing a new drinking water source.

Theme 5 (Clean and Green village) accounted for 18% of the total activities, focusing on a wide range of tasks, such as cleanliness drives, plantation drives, solar lighting installations, etc.

The remaining 12% of activities were divided among Themes 6 to 9, each having varying focus areas ranging from education to connectivity.



BUDGET ALLOCATION ACROSS THEMES:

The total budget estimates for GPDP activities amounts to Rs.13.82 lakhs distributed across different themes.

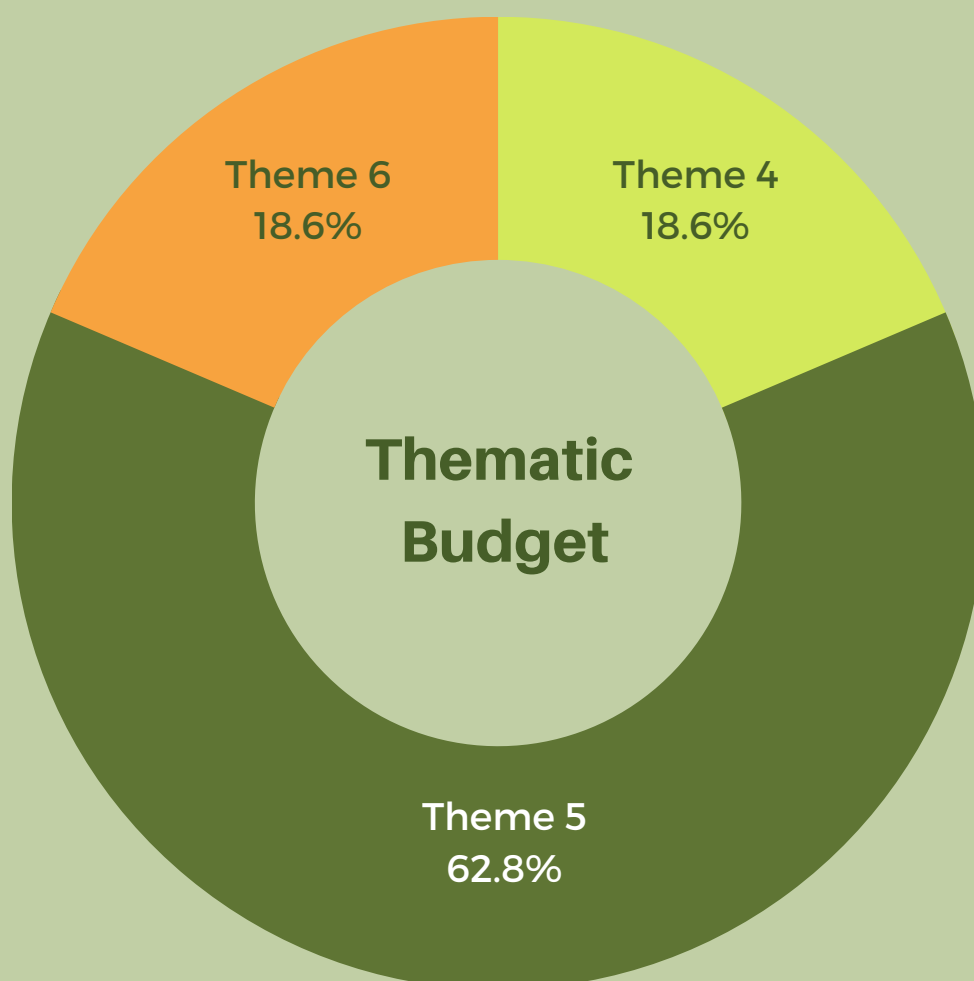
The most significant share of the budget, nearly 40%, was allocated towards Theme 4 (Water sufficient village), specifically focusing on creating new drinking water sources.

This was followed by Theme 1 (Poverty free and enhanced livelihoods village) and Theme 5 (Clean and Green village), with each aligned with 20% of the total budget

The budget concerning Theme 1 is meant to encourage self-employment and support local industries, while the allocation for Theme 5 aimed at environment conservation and cleanliness drives.

Theme 2 (Healthy village) and Theme 3 (Child friendly village) accounted for 10% and 5% of the budget, respectively, indicating a targeted expenditure on healthcare and child development activities.

The majority of sanitation related activities are to be funded by the Swachh Bharat Mission, ranging from INR 1000 to INR 20000 for diverse initiatives including compost pit



creation, litter bin purchasing, and sanitation kit procurement. Environmental and land improvement efforts are supported by the MG National Rural Employment Guarantee Act and the Gram Panchayat's Own Funds. The XV Finance Commission would be the source of INR 256985 especially for the creation of a new drinking water source, construction of roads, drainage construction, and construction of a segregation unit.

In Theme 4, awareness generation on cleanliness and sanitation is emphasized.

Theme 5 includes a series of environmental awareness activities related to stubble burning, deforestation, human-wildlife conflict, safe fuel, plastic pollution, and the use of cloth bags.

Finally, Theme 9 includes actions to ensure access to maternal benefits, highlighting women's rights and healthcare services.

LOW-COST/NO-COST AWARENESS GENERATION ACTIVITIES:

The GPDP of Gram Panchayat Rehore also comprises number of no-cost awareness generation activities spread across the themes.

Under Theme 1, several activities have been included like the organization of camps for encouraging self-employment and demand generation for government welfare schemes, providing a dual advantage of awareness and welfare provision

Theme 2 aligned activities focuses on the VPRP-Demand for Health Card, promoting health awareness at no cost. Theme 3 activities consists of numerous awareness campaigns on the services of ICDS, highlighting the importance of nutrition and early childhood education.

These no-cost activities across various themes play a significant role in educating the local community and also reflects the community's commitment towards achieving the SDGs with limited resources.

RECOMMENDATIONS

Based on the findings from the field visits and discussions, the following recommendations are proposed:

Community Participation: During field visits and participation at the Gram Sabha it was observed that the participation was not exhaustive and there is need to do proper 'Munadi' days before the Gram Sabha to inform people timely. Therefore, there is need to enhance community participation in the Gram Sabha planning and implementation process to ensure inclusivity and ownership. It was also observed that lack of participation in also leads to non-inclusion of certain other very specific issues like seed quality issue, less efficacy of artificial insemination in animals, children related issues (sports kits, etc.).

Participation of the line departments: It was also observed that very few line departments participate in the scheduled Gram Sabha. To make aware the community about the ongoing government schemes and programmes, to align people demands with relevant schemes, and to explore convergence opportunities there should be increased participation from the representatives of the line departments. There were no activities identified for the themes 7 (socially secured village), and 8 (village with good governance) respectively.

The presence of greater number of line departments could have facilitated Gram Sabha to explore and discuss the activities concerning the themes 7 and 8.

Data at the Gram Panchayat level: There is a need to improve data collection at the Gram Panchayat level to facilitate gap identification and evidence-based planning.

Capacity Development of Gram Panchayat level Elected Representatives and functionaries: There is need to strengthen the capacity of Gram Panchayat level functionaries for effective implementation and monitoring of the theme-based GPDP.

PRIME Mobile App: To strengthen data collection, planning, and monitoring at local level, SDGCC Haryana proposes to develop an integrated and single interface internet-based Information Management System for Gram Panchayats/Blocks/Districts/State. The PRIME Mobile Application is detailed in the next section.

PRIME MOBILE APP

Introduction:

At Gram Panchayat/ Block/ District level, various schemes/ programmes are being implemented but ownership/ availability of data is only available with the concerned department. The sharing of information/ data across departments is either limited or does not exist.

The implementation of programmes at the village level is through human resources deputed by the concerned departments but involvement of PRI members is limited to only in the work related to infrastructure development rather than comprehensive integrated approach towards planning and data driven decision making.

PRI members are generally not aware about the shortfalls/ low performing areas due to non-availability and accessibility of all departments' schemes/programmes data at one place. Gram Panchayats/Block and District are developing plans in silos seldom knowing the key concerned areas, where actually more focused approach is required for achievement of SDGs.

PRI members are generally not aware about the shortfalls/ low performing areas due to non-availability and accessibility of all departments' programmes data at



one place. Gram Panchayats/Block and District are developing plans in silos seldom knowing the key concerned areas, where actually more focused approach is required for achievement of SDGs.

Funds are allocated to panchayats mostly in equal proportion due to non-availability frequent, updated and disaggregated data along with key concerned areas where more focused and targeted approach is required.

Due to lack of information, the progress of few central/ state schemes is far behind in achieving the targets set at the national/ global level.

The proposed PRIME Mobile app will provide the interactive user-interface with availability of data from the different departments along with highlighted key concerned areas of the village/panchayat, evidence-based decision making power along with optimal utilization of funds corresponding to gram panchayat/ block/ district requirement.

PRIME (Panchayati Raj Information Mapping and Evaluation) App:

To strengthen governance system at local level, SDGCC Haryana proposes to develop an integrated and single interface internet-based Information Management System for Gram Panchayats/Blocks/Districts/State. It will comprise, inter alia, information related to finances & accounting, geo-tagging of assets, progress reporting, gram panchayat profiling, action plan creation, activity output, ranking and index score calculation of panchayats/ blocks/ districts etc. The system will be called “PRIME (Panchayati Raj Information Mapping and Evaluation) App” and will provide information in a single platform aligning with all the 9 themes.

Under the supervision of Sarpanch, Gram Panchayat will access and update information in the PRIME App.

Moreover, the nodal department at the District and State level can monitor the activities of Gram Panchayat using this application. It will also help the government functionaries to develop policies and plans based on data analysis and findings of PRIME Application.

Objectives of PRIME APP:

- To provide a single interface for the preparation and implement Gram Panchayat/ Block/ District Development Plans.
- To bring accountability and efficiency at Gram Panchayat/ Block/ District level
- To improve governance of Panchayati Raj Institutions.
- To support in developing evidence-based Gram Panchayat/ Block/ District Development Plans aligning with SDGs (Theme Wise) and track panchayat activities at various levels
- To provide information related to various schemes being implemented in the panchayats
- To provide real time information of the Gram Panchayat activities.
- To support in developing policies and plans for Gram Panchayats based on the data findings.
- To help in analysis of functioning of Gram Panchayats and in developing Panchayat Development index (PDI).

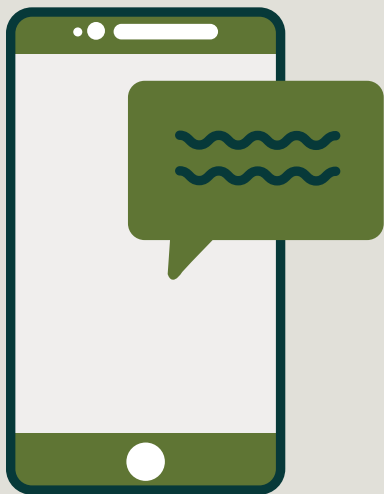
PRIME App Prototype Development Methodology:

LIF Customization Field Testing -

The LIF customization and field-testing at Gram Panchayat Rehore was jointly done by M&E Lead and Decentralization Lead.

Prototype Development-

Based on the LIF testing at GP Rehore, a mobile prototype named PRIME (Panchayati Raj Information Mapping and Evaluation) has been developed by Mr.Satinder Pal, Monitoring & Evaluation Lead for robust data collection, planning, monitoring & evidence based GPDP.



Features of PRIME App:

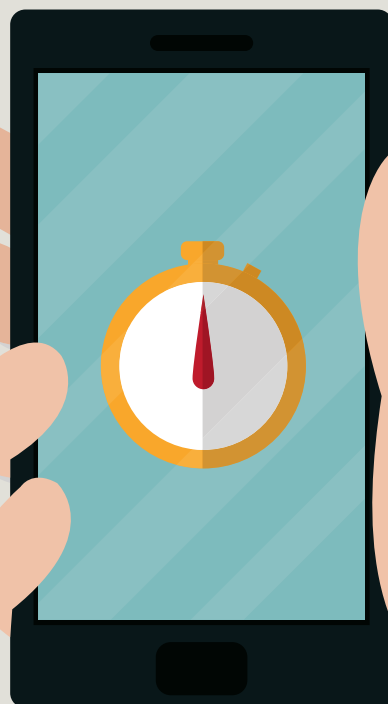
- Theme Information
- GIS Based Data Analysis
- Easy to report data in the form of Yes/No, Camera Click Photo Upload with Geo Location
- Mapping with Block and District officers for data validation and monitoring of activities at Gram Panchayat Level
- Checklist/ To-Do list for the GP member
- Time Series Data Management

Benefits of PRIME APP:

- Easy to use app in Hindi and English languages
- Event driven approach to facilitate all level of users in easy to punch data, view and analyze the data
- Auto-populated gaps based on the data input
- Auto-generated individual Gram Panchayat, Block and District Profiles
- GIS based event capturing including photographs, current location etc.
- A complete financial management at the level of Gram Panchayat and above
- An interactive drill-down dashboard to capture last mile data
- Auto-generated robust Gram Panchayat/ Block/District Development plans
- Easy to communicate with existing running IT systems
- A strong evidence-based decision support system
- Time-series data capturing and analysis
- Auto calculated Panchayat Development Index, Block and District Index and Ranking
- Self-learning training modules for all level of users
- Alerts, Pop-ups etc. to quickly disseminate information from top to bottom

Recommendation:

It is proposed that this prototype may be extended further in a full-stack mobile application with frontend, backend, and database management functionalities. Subsequently, the integration of PRIME Mobile App with existing running IT systems of the State may be carried out with further scope of its integration with other country level platforms such as eGramSwaraj, Mission Antodaya, etc. The usage of this app is expected to empower the Panchayat members for the evidence based development of plans, optimal utilization of funds and to bring transparency in execution of activities.



ANNEXURE

DETAILS OF GPDP ACTIVITIES

Theme	Activity	Budget (Rs.)	Scheme
Theme 1	Benefits to PDS beneficiaries	No- cost activity	Awareness Generation
Theme 1	Camp to encourage youth for self employment (2 nos.)	No- cost activity	Awareness Generation
Theme 1	Promotion of Fish Farming	No- cost activity	Awareness Generation
Theme 1	Creation of Self-Help Groups in Gram Panchayat	No- cost activity	Awareness Generation
Theme 1	VPRP- Demand for NSAP Widow Pension	No- cost activity	Awareness Generation
Theme 1	VPRP- Demand for Pradhan Mantri Awas Yojana	No- cost activity	Awareness Generation
Theme 1	VPRP-Demand for UJJWALA Gas connection	No- cost activity	Awareness Generation
Theme 1	Camp to encourage youth for self employment	No- cost activity	Awareness Generation
Theme 2	VPRP-Demand for Health Card	No- cost activity	Awareness Generation
Theme 3	Awareness Campaign on Services of ICDS (3 nos.)	No- cost activity	Awareness Generation
Theme 3	VPRP- Public Services- Mid-Day Meal provisions	No- cost activity	Awareness Generation
Theme 3	VPRP-School Drop Outs	No- cost activity	Awareness Generation
Theme 4	Awareness generation on cleanliness and sanitation	No- cost activity	Awareness Generation
Theme 4	Creation of a new source of drinking water	2,56,985	XV Finance Commission

Theme	Activity	Budget (Rs.)	Scheme
Theme 5	Cleanliness Awareness Drive	No- cost activity	Awareness Generation
Theme 5	Desilting of Water Body	No- cost activity	Awareness Generation
Theme 5	Training of PRI elected representatives and other officials	No- cost activity	Awareness Generation
Theme 5	VPRP- Burning of stubble / crop residue (Environment related)	No- cost activity	Awareness Generation
Theme 5	VPRP- Deforestation (Environment related)	No- cost activity	Awareness Generation
Theme 5	VPRP- Human Wildlife Conflict (Environment related)	No- cost activity	Awareness Generation
Theme 5	VPRP- Lack of safe fuel and firewood (Environment related)	No- cost activity	Awareness Generation
Theme 5	VPRP- Plastic Pollution (Environment related)	No- cost activity	Awareness Generation
Theme 5	Solar Pumpset Installation	No- cost activity	Awareness Generation
Theme 5	Construction of Community Sanitary Complex	10000	Swachh Bharat Mission
Theme 5	Construction of Toilets in public institutions	10000	Swachh Bharat Mission
Theme 5	Cost of preparation of Project Reports and Technical Plans for Sanitation Projects	2000	Swachh Bharat Mission
Theme 5	Creation of Community Compost Pits for group of Households	20000	Swachh Bharat Mission

Theme	Activity	Budget (Rs.)	Scheme
Theme 5	Creation of Community Soak Pits for group of Households	10000	Swachh Bharat Mission
Theme 5	Creation of Compost Pits for individual Households	10000	Swachh Bharat Mission
Theme 5	Creation of Soak Pits for individual Household for onsite Grey Water Management	5000	Swachh Bharat Mission
Theme 5	Greywater Management System	10000	Swachh Bharat Mission
Theme 5	Operation & Maintenance of Community Compost Pits	10000	Swachh Bharat Mission
Theme 5	Operation & maintenance of Community Sanitary Complex	2000	Swachh Bharat Mission
Theme 5	Operation & Maintenance of Community Compost Pits	2000	Swachh Bharat Mission
Theme 5	Operation & Maintenance of Grey Water Management System	20000	Swachh Bharat Mission
Theme 5	Purchase of Litter bins to be fixed at public places	10000	Swachh Bharat Mission
Theme 5	Purchase of Segregation Bins to be fixed at public places	1000	Swachh Bharat Mission
Theme 5	Repair of Drainage Channel	10000	Swachh Bharat Mission

Theme	Activity	Budget (Rs.)	Scheme
Theme 5	Retrofitting of single pit toilets to Twin Pit Toilets	1000	Swachh Bharat Mission
Theme 5	Use of Cloth Bag for shopping instead of plastic bags	1000	Swachh Bharat Mission
Theme 5	Agro-forestry	10000	MG National Rural Employment Guarantee Act
Theme 5	Compost food waste at home	10000	MG National Rural Employment Guarantee Act
Theme 5	Plant trees to reduce the impact of pollution	10000	MG National Rural Employment Guarantee Act
Theme 5	Roadside Plantation	3000	MG National Rural Employment Guarantee Act
Theme 5	Social forestry	1000	MG National Rural Employment Guarantee Act
Theme 5	Social forestry in grazing land	1000	MG National Rural Employment Guarantee Act
Theme 5	Land Development	300000	MG National Rural Employment Guarantee Act
Theme 5	Procurement of Sanitation Kits	10000	Own Funds
Theme 5	Cost of preparation of GPDP covering all processes like PRA, IEC, surveys, preparing maps	2000	Own Funds

Theme	Activity	Budget (Rs.)	Scheme
Theme 5	Purchase of equipment (including safety equipment) for waste management	1000	Own Funds
Theme 5	Services of collection & transportation of waste from household to treatment site	9000	Own Funds
Theme 5	Solar Street Lighting Installation	10000	Own Funds
Theme 5	Vermi-compost construction	12000	Own Funds
Theme 5	Creation of deep burial pits for safe disposal of menstrual waste	1000	Own Funds
Theme 5	Materials required for composting	1000	Own Funds
Theme 5	Creation of Plastic Waste Storage Unit	1000	Own Funds
Theme 5	Connecting Septic Tanks with Soak Pits	1000	Own Funds
Theme 5	Payment of professional fees for the services of contractual and outsourced personnel	1000	Own Funds
Theme 5	Services of mechanical cleaning collection of Faecal Sludge	1000	Own Funds
Theme 5	Creation of Drainage Channel for Management of Grey Water	1000	Own Funds
Theme 5	Any other operation and maintenance needs related to Solid Waste Management	1000	Own Funds

Theme	Activity	Budget (Rs.)	Scheme
Theme 5	Weighing Machine for use in Solid Waste Management	1000	Own Funds
Theme 5	Operation & maintenance of composting shed/center	1000	Own Funds
Theme 5	Preparation of accounts auditing expenses, etc.	1000	Own Funds
Theme 5	Payment of Honorarium to Swachhagrahis	1000	Own Funds
Theme 5	Hiring of support agencies	1000	Own Funds
Theme 5	Construction of Segregation Unit	85660	XV Finance Commission
Theme 5	Drainage Construction	256985	XV Finance Commission
Theme 6	Construction of Roads	256980	XV Finance Commission
Theme 9	Access to Maternal Benefits	No- cost activity	Awareness Generation

